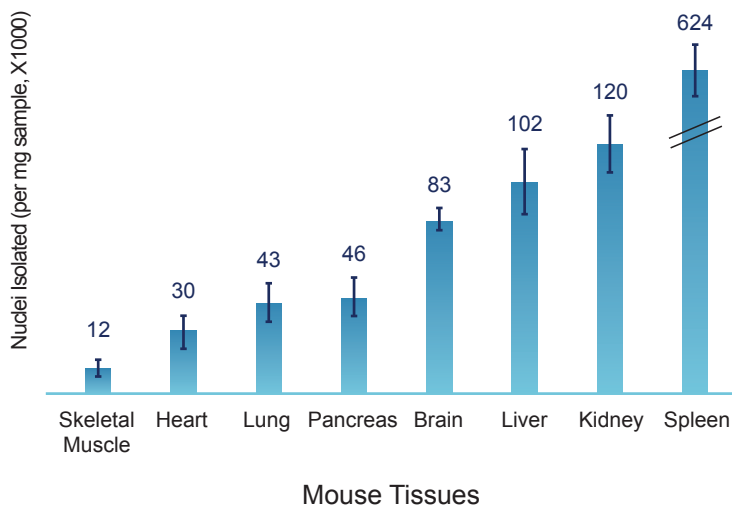




Genomic analysis of nuclei isolated directly from solid tissue may provide better cell-type representation than analysis of viable cells, and can give insights into the state of the cellular transcriptomes. **S2 Genomics' bench-top Singulator™ System and its single-use cartridges enable rapid, hands-off and reproducible tissue dissociations at low temperature into high-yield suspensions of nuclei.** You can choose from pre-set protocols and pre-formulated reagents for a wide range of tissues, or create protocols with customizable parameters and use your reagents for your specific tissues.

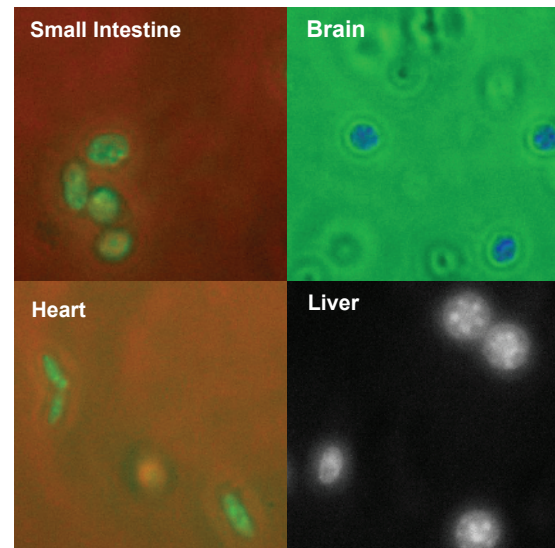
## Automated Production of Nuclei From Solid Tissues

### Consistent High Yields of Nuclei



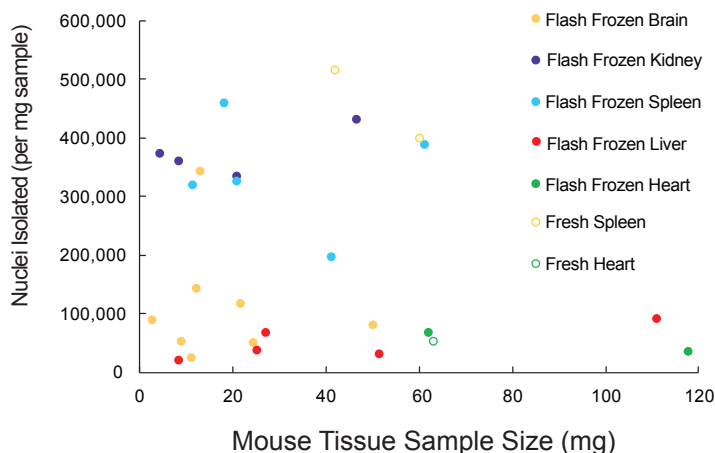
### Images of Nuclei Extracted From Flash Frozen Mouse Tissues

Courtesy of Dr. Minoda, Laboratory for Cellular Epigenomics, RIKEN Yokohama, Japan.



Merged DAPI-stained and bright-field images of small intestine, brain and heart tissue nuclei; DAPI stained liver nuclei.

### High Yields From Small Samples



### KEY BENEFITS

- Reproducible results
- Walk-away operation
- Customizable protocols
- High yields: 10,000 to >600,000/mg, tissue dependent
- Process fresh, frozen and OCT tissues
- Improve success rates for precious samples
- Isolate nuclei in 7 minutes
- On-board reagents for up to 100 nuclei runs
- Perform low-temperature dissociations
- Minimal operator training
- Intuitive touch-screen interface

# The Singulator™ 100 System

## Solid Tissue Dissociation. Automated.

Choose from a selection of automated pre-set protocols and pre-formulated reagents to produce single-cell or nuclei suspensions. Create your own protocol with customizable parameters, including mincing, enzyme incubation time, temperature, mixing and mechanical disruption profile or use your reagents for your specific tissues.



## Tissues Demonstrated on the Singulator™ 100 for Nuclei Isolation

### Human

- \*Aorta
- \*Brain (Adult, Infant, Fetal)
- \*Breast Tumor
- \*Cerebral Organoids
- \*Colon (Normal, Polyp & Tumor)
- \*Heart (Adult & Fetal)
- \*Hemangioma
- \*Intestine (Fetal)
- \*Lung (Fetal)
- \*Muscle (TA & SA)
- \*Prostate (Normal & Tumor)
- \*Retinal organoids (WT & Gene Knockout)
- \*Spleen (Fetal)
- \*Thymus (Fetal)
- \*Vascular Abnormality (Arterial)
- \*Vascular Abnormality (Lymphatic)

*\*Customer-Lab Demonstrated*

### Mouse

- Brain
- Colon (Normal & PDX Tumor)
- Heart
- Intestine
- \*Kidney (Normal & Pre-cystic)
- Liver
- Lung
- Lymph
- Muscle
- Pancreatic PDX Tumor
- \*Spinal Cord
- Spleen

### Rat

- Brain
- Kidney
- Liver
- Lung
- Spleen

### Spiny Mouse (*A. cahirinus*)

- \*Kidney

### Honeybee (*A. mellifera*)

- \*Thorax

### Arabidopsis

- \*Whole Seedling
- \*Root tip

For the latest list of tissues demonstrated on the Singulator 100, visit:

[www.S2Genomics.com/Tissues](http://www.S2Genomics.com/Tissues)

S2 GENOMICS 6712 PRESTON AVE, STE D LIVERMORE, CA 94551 S2GENOMICS.COM INQUIRIES@S2GENOMICS.COM



For research use only. Not for use in diagnostic procedures. S2 Genomics makes no representation or warranty as to the usefulness, completeness, or accuracy of the information contained in this brochure. The products, services, and specifications set forth in this brochure are subject to change without notice and S2 Genomics disclaims any and all liability for such changes. The information contained herein is provided without warranties of any kind, either express or implied, and S2 Genomics disclaims any and all liability for typographical, printing, or production errors or changes affecting the products, services, and/or the specifications contained herein. It is the responsibility of the customer to thoroughly analyze all aspects of the customer's proposed application for the products and services. Singulator™ is a trademark of S2 Genomics.